

Alligator, Alligator

Susan Paradis

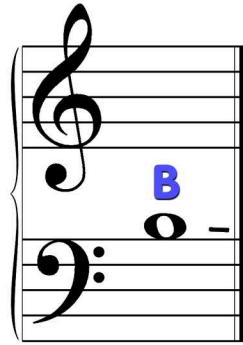
Al - li - ga - tor, Al - li - ga - tor, All you play is A!
Why not use an - oth - er note, can you try B or C?



Can't you find an - oth - er note to play for us to - day?
D or E or F or G, please play an - oth - er key!

Teacher duet

The Baseball Bear



B	is	for	bear,	big	brown
B	is	for	big,	B	for
					bears,
					brown,

B	is	for	bears	base	ball!
I'm	watch - ing	bears	play - ing	base	ball!

Teacher Duet



Pat The Cat

Pat your head 2 times.

	1 2 1 2

Pat your knees 2 times.

	1 2 1 2

Pat your head 4 times.

Count 1 - 2 - 3 - 4

1 - 2 - 3 - 4



The Doughnut Mystery



Susan Paradis

1 2

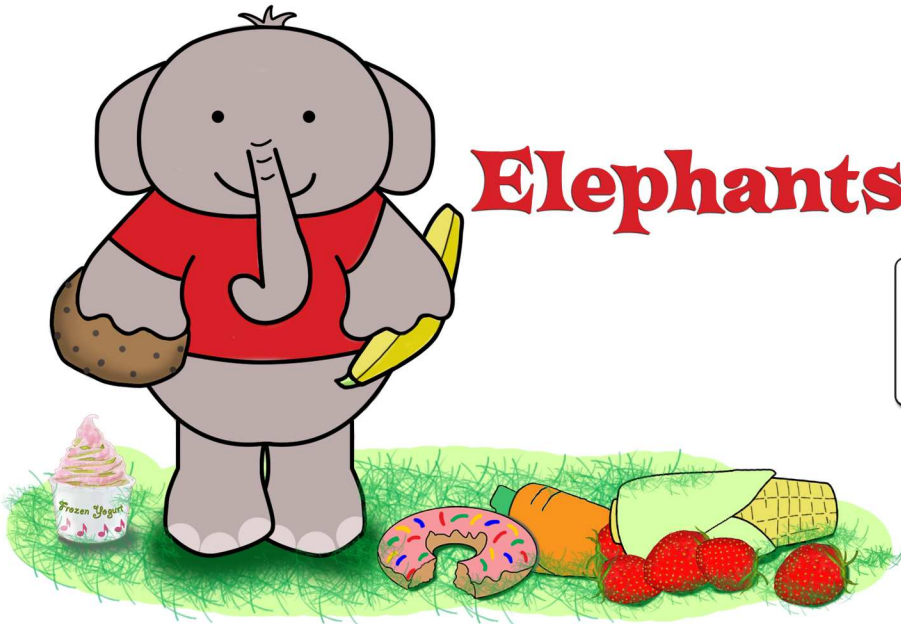
Have you seen my Did some - bo - dy	dough - nut, steal it?	cov - ered up with Some - one cute and	ic - ing, fuz - zy?

3 1

And some pret - ty With a tail and	sprin - kles? big paws?	Where can it Who could it	be? be?

Teacher duet

Swing! $\text{♪♪} = \text{♪}^3\text{♪}$



Elephants Are Eating



Susan Paradis

4

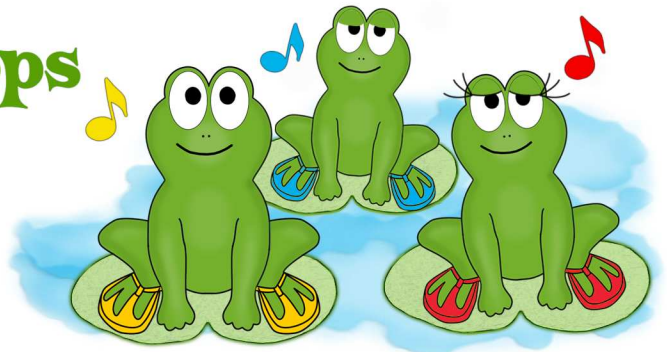
Musical notation for the first system, 4/4 time signature. The treble clef staff contains the melody with lyrics: E E E, El - e - phants are eat - ing. The bass clef staff is empty.

Musical notation for the second system, 4/4 time signature. The treble clef staff contains the melody with lyrics: E, E, E, Eat - ing ev' - ry - thing!. The bass clef staff is empty.

Teacher Duet

Two staves of musical notation for a teacher duet, both in bass clef and 4/4 time signature. The first staff has a melody with eighth notes and rests. The second staff has a similar melody with eighth notes and rests.

Frogs in Flip Flops



Susan Paradis

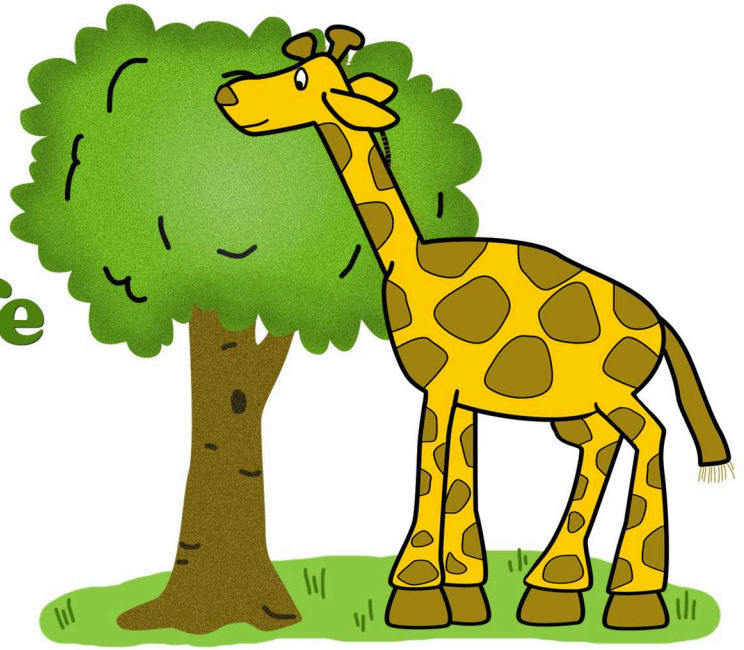
	F	F	F for Frog!	Sit - ting in the	first - space.
--	---	---	-------------	-------------------	----------------

	F	F	F for Frog!	Frog - ies wear - ing	flip flops.
--	---	---	-------------	-----------------------	-------------

	Flip	down to	C and flop	back to	F!
--	------	---------	------------	---------	----

Teacher Duet

G is for Giraffe



Susan Paradis

He is tall so ve - ry tall, he's tall - er than the trees.

The first line of music is written on a grand staff (treble and bass clefs) in 4/4 time. The melody is on the treble clef, and the bass line is on the bass clef. The lyrics are placed below the notes. There are four measures in total.

While he's up there look - ing 'round he eats some tast - y leaves.

The second line of music continues the melody and bass line from the first line. It also consists of four measures.

Teacher Duet

The Teacher Duet section consists of a single line of music on a bass clef staff. It features a series of eighth notes with beams, each followed by a quarter rest, creating a rhythmic pattern. There are eight measures in total.